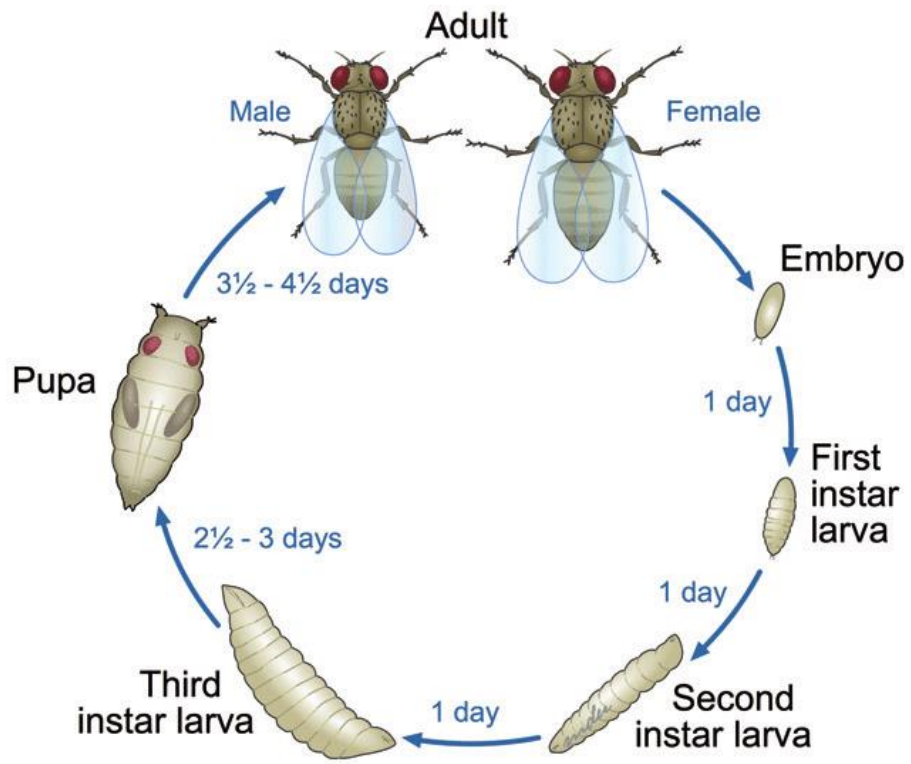
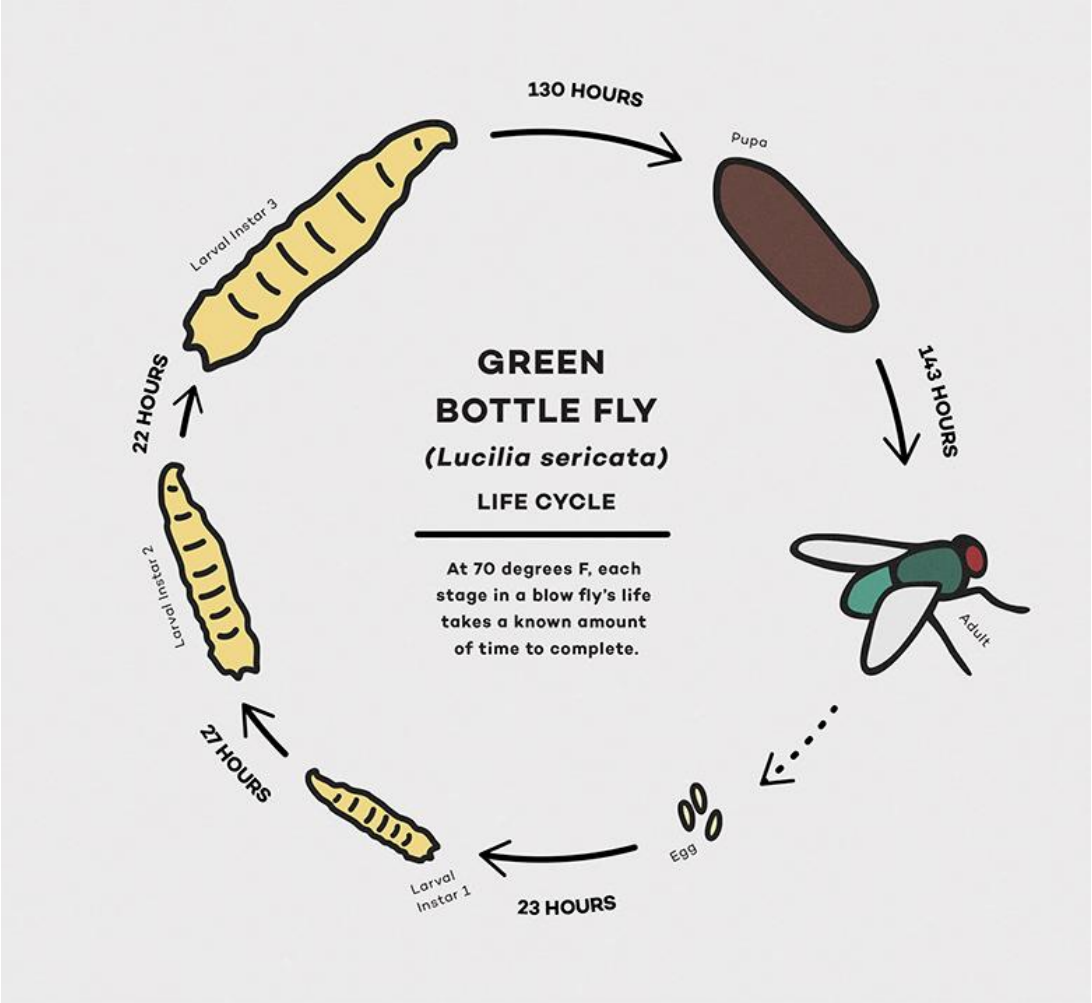


The theme for the investigation is a human has taken a bite of a fruit before dying out in a rural farm field. Fruit flies as well as blow flies are found at the scene. Investigation takes place into the location and developmental stages of the insect larvae and pupa. Data and details are provided for participants to work with in determining the time frame of the person died.

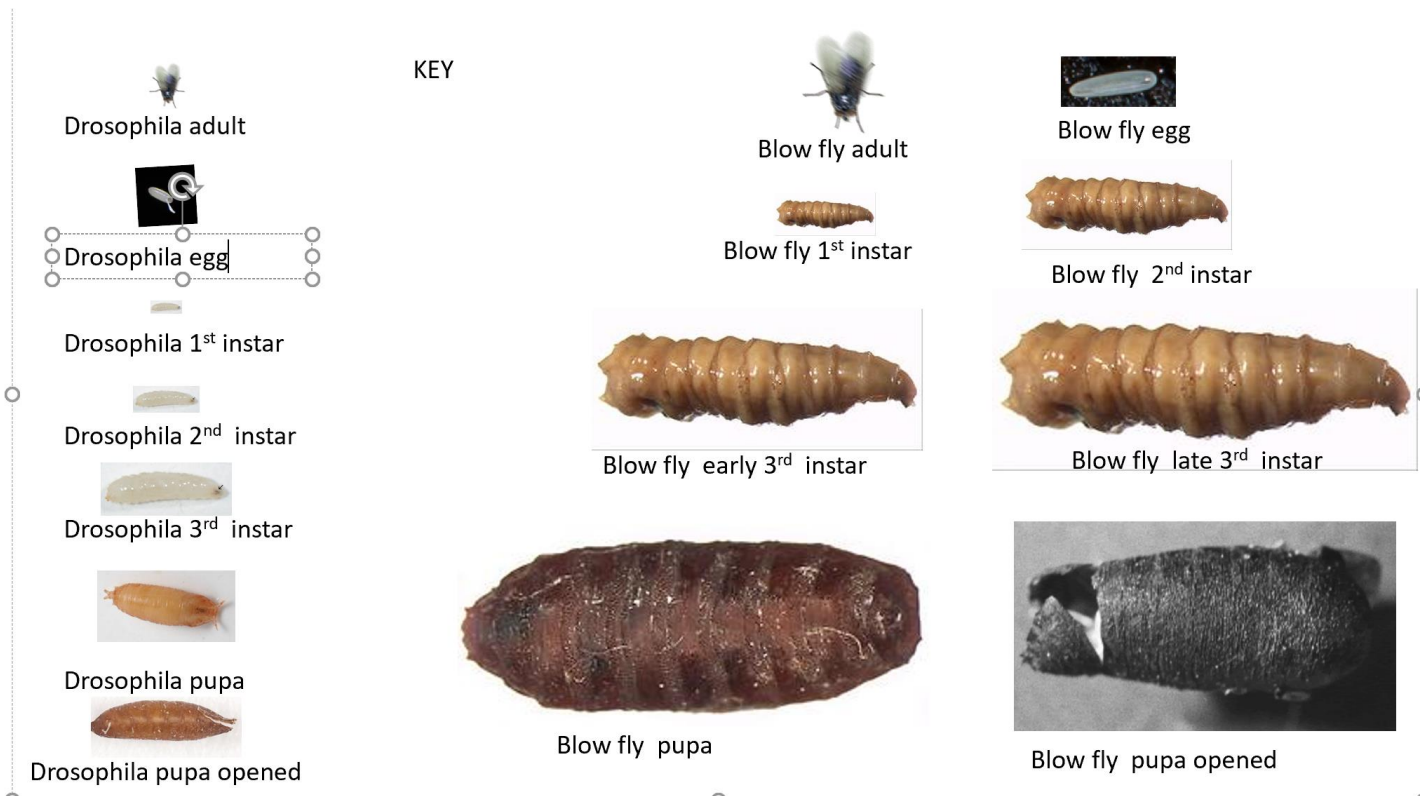




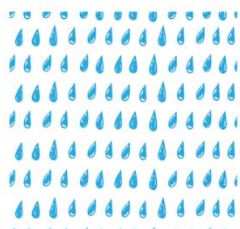
Drosophila life cycle



Blow fly life cycle



Empty egg cases of Drosophila and blow fly on the ground. No larvae or pupa here.



RAIN